

ANNUAL REPORT 2015



COMMUNITY FOUNDATION
of South Georgia



ABOUT Created in 1996 by a volunteer Board of Trustees, the Community Foundation of South Georgia is a 501(c)(3) nonprofit, tax exempt, publicly supported charitable organization. Our passion is to fulfill our donors' philanthropic interests and desires through the establishment of funds. These "funds" or charitable savings accounts created by individuals, families, businesses, or nonprofits are designed to benefit their particular charitable goals.

Today, our foundation is a collection of more than 340 individual funds, existing to encourage giving, inspire action and improve lives in South Georgia.

MISSION

To be a catalyst for the establishment of charitable funds which benefit the community for generations to come.

To serve the varied interests and needs of donors.

To promote local philanthropy.

To serve as a steward of funds.

To provide leadership and resources in identifying and meeting local needs.





Dear Friends,

It has truly been an amazing year at the Community Foundation of South Georgia. In 2015, we celebrated 19 years of service, surpassed a major grant-making milestone and moved our offices to a new home in downtown Thomasville, Georgia. Amidst some of the changes we underwent, one thing remained constant, the generosity and selflessness of the donors that we work with. Each day we are blessed to connect these caring people with causes that matter in South Georgia and beyond.

As we head into the New Year, we are excited to see what the future holds not only for CFSGA, but for the communities in which we live. We look forward to identifying community needs and developing long-term solutions hand-in-hand with our generous donors. Thank you for your continued partnership in making a difference for generations to come.

Sincerely,

Russ Henry
Chairman

David Carlton
President

IN 2015, WE CELEBRATED HAVING
MADE **\$100 MILLION** IN GRANTS
SINCE WE WERE FOUNDED IN 1996.

While this milestone is exciting, we were also able to
accomplish the following this year alone:

1,807 GRANTS TO
516 NON-PROFITS

\$6,867,596 IN
GRANTS **AWARDED**

\$146,795 IN **SCHOLARSHIPS**
TO 123 INDIVIDUALS

\$7,201,908 IN **GIFTS**

18 NEW FUNDS ESTABLISHED

\$52,357,324 IN **TOTAL ASSETS**

WHY ESTABLISH A FUND ?



SIMPLICITY It's easy to give to and through the Community Foundation. There are no IRS required minimum distributions and we handle all of the necessary paperwork, acknowledgements, due diligence, research and administration.

CONVENIENCE It's a very simple process to create a fund with the Community Foundation and the continued relationship remains as easy throughout the life of the fund. We are here to serve you and your family and to make your philanthropic experience as enjoyable and fulfilling as it should be.

RECOGNITION OR ANONYMITY When a gift is distributed from your fund, you may choose to receive recognition or remain completely anonymous. Your gift and grant history remains confidential at all times. Donors or nonprofits may create a fund tailored specifically towards their own interests. Whether a donor wishes to support one organization or a broad range of interests, we can accommodate all of your philanthropic desires.

TAX BENEFITS The Community Foundation offers the maximum level of tax deduction for charitable giving. We are able to accept a variety of assets including cash, stock, real estate, life insurance proceeds and retirement plan assets.

PERMANENCE The gifts that we receive have the ability to benefit the community in perpetuity. Donors can be confident that the original intent of these gifts will be honored and available to meet the changing needs of their community.

DONOR ADVISED FUNDS Donors make the recommendations for grants to organizations of their choice, we handle all administration and due diligence. These funds allow donors to take an active role in their communities through philanthropy.

Anonymous Funds

Dr. & Mrs. D.W. Adcock Charitable Fund

A&J Electric Charitable Fund

Alderman Family Charitable Fund

Jaimie and Lynne Allen Charitable Fund

Jimmy and Quay Allen Charitable Fund

Margaret G. Anderson Charitable Fund

Thomasville Antiques Show Foundation

Charitable Fund

Stephen R. and Anne H. Avera Charitable Fund

Bainbridge Rotary Club Charitable Fund

Balfour Foundation Fund

Beadles Charitable Fund

Beadles Family Charitable Fund

Joe and Mary Beverly Charitable Fund

Warren Bicknell, III & Elizabeth H. Bicknell

Charitable Fund

Blackberry Patch Stewardship Fund

Bonner Gooding Charitable Fund

Thomasville High School Band Booster Club Fund

David & Vicky Bosse Charitable Fund

Cleve Bostick Memorial Fund

Chip & Kim Bragg Family Charitable Fund

Ann O. Brown Annuity Fund

Helen and Lumis Brown Charitable Fund

Travis & Jeanna Bryant Charitable Fund

Change for Children Charitable Fund

Chason Family Charitable Fund

Cherokee Foundation-General Fund

Cherokee Foundation-Bicknell Fund

Cherokee Foundation-Firman Fund

Cherokee Foundation-Sedgwick Fund

Cherokee Foundation-Singleton Fund

Lee & Russell Chubb Fund

CJB Family Charitable Fund

Chris & Amy Cooper Family Charitable Fund

John and Anna Carlton Charitable Fund

Bond Crosby Memorial Fund

Wayne Damron Family Charitable Fund

Dr. David Daniel Memorial Fund

Tim & Sarah Daniel Charitable Fund

Jasper & Marthalene Davis Foundation Fund

Danny & Samantha DeMersseman Foundation Fund

Destiny Foundation Fund

Dunflo Foundation Fund

Carolyn H. Eager Charitable Fund

Robert & Mary Eager Charitable Fund

Equity Group - Georgia Division, LLC Charitable Fund

Ellis Family Charitable Fund

Elizabeth M. English Charitable Fund

Eddie Taylor Foundation Fund

James D. Eunice Legacy Fund

Fenlon Family Charitable Fund

The Fifth Friday Foundation Fund

Jay and Kim Flowers Family Foundation Fund

Flowers Family Charitable Fund

Langdon S. and Margaret P. Flowers Charitable Fund

Kathleen Vignos Folsom Charitable Fund

Cole & Brooke Forsyth Charitable Fund

Fowler Family Charitable Fund

Ann G. Friedlander Charitable Fund

Jacqueline & Matt Friedlander Charitable Fund

Allan and Anne Gardner Charitable Fund

Joshua P. Geihlsler Fund

George & Nell Lane Charitable Fund

Benjamin E. Gordon Memorial Fund

Dr. Ben Grace Fund

R.A. Griffin Jr. & Barbara T. Griffin Charitable Fund

R.A. Griffin Family Foundation Fund

Mike & Kelly Grimsley Charitable Fund

Vivian Hays Guthrie Charitable Fund

H2 Charitable Fund

Haney Family Charitable Fund

Mike and Leslie Harrell Charitable Fund

Higdon Family Charitable Fund

Blanche & Napoleon Hill Memorial Fund

Justin T. Hobdy Memorial Fund

Honey Creek Foundation Fund

Daniel B. and Felicity S. Jeter Charitable Fund

James M. and Rosalind T. Jeter Charitable Fund



Jeter-Small Charitable Fund
 Joyce Mills Whitfield Memorial Fund
 Bob Jones Family Charitable Fund
 Celetta P. Jones & Harry T. Jones, Jr. Foundation Fund
 Harry T. Jones Family Fund
 Jamie Watt Jones Charitable Fund
 William Powell and Caren McKenzie Jones Fund
 Clint and Alane Kadel Charitable Fund
 Kevin & Amy King Family Charitable Fund
 Kinney Family Charitable Fund
 Mabel V. Kral Charitable Fund
 Bernie & Kathy Lanigan Charitable Fund
 J. Christopher Lanigan Charitable Fund
 Lanigan CPA Partners & Southeast Asset Advisors Fund
 Phillip & Karen Leabo Charitable Fund
 Chelsea Rae Langford Memorial Fund
 Patricia Lenti-Crane Charitable Foundation Fund
 Magbalon Family Charitable Fund
 Jerry Maxwell Charitable Fund
 Medical Benevolence Foundation Advised Fund
 Milberg Family Charitable Fund
 Wade & Jill Miller Charitable Fund
 Bruce and Dawn Muller Charitable Fund
 Jim Neill Memorial Foundation Fund
 Jo Oakley Nesbitt Foundation Fund
 New Found Community Foundation Charitable Fund
 Mr. and Mrs. William U. Norwood, III, Family Fund
 Olive You Charitable Fund
 Paracca Family Charitable Fund
 J. Mark & Carson H. Parker Charitable Fund
 Diane W. Parker Charitable Fund
 Joe & Frances Parker Charitable Fund
 Vann and Lauri Parrott Charitable Fund
 Thomas E. & Toni C. Perry Fund
 Frank R. Pidcock Foundation Fund
 William R. and Joann B. Ponder Charitable Fund
 Prince Family Charitable Fund
 Thomas & Katie Reed Family Charitable Fund
 Rise Development Charitable Fund
 Margaret W. Roddenbery Charitable Fund
 Ken Allen Rodgers Memorial Fund
 Ruth M. Rollins Foundation Fund
 The Rotary Club of Thomasville Charitable Fund

Ruby Stephens Worldwide Missions Fund
 The Scott Family Fund
 Mr. & Mrs. David Scott Charitable Fund
 Ellery and Robin Sedgwick Fund
 Allen & Robin Shiver Charitable Fund
 Nancy & Doug Silvis Charitable Fund
 James B. & Monique F. Sineath Charitable Fund
 Richard L. & Kay Singletary Charitable Fund
 Savannah Singletary Memorial Fund
 Shingler Family Charitable Fund
 SOGA Charitable Fund
 Storm Services Charitable Fund
 Effie R. & Rogers G. Streetman Charitable Fund
 Terry Michael Strickland Memorial Fund
 Stripling Charitable Foundation Fund
 Tallokas Foundation Charitable Fund
 Pete Thomas Fund
 Ralph F. Thompson Memorial Fund
 Jerry and Marta Turner Charitable Fund
 Tyson Hopkins Charitable Fund
 Vann Family Charitable Fund
 Hosea Hall Vann and Lilly Eason Vann Charitable Fund
 Laura & Jud Vann Charitable Fund
 Richard S. & Ann A. Vann Charitable Fund
 Heeth and Jacqueline Varnedoe Charitable Fund
 Kevin & Sonia Vick Charitable Fund
 Randy & Susan Wages Family Charitable Fund
 Tony & Lisa Wages Charitable Fund
 Rick & Sharon Wagner Charitable Fund
 Brad & Jackie Walter Charitable Fund
 Ward & Barbara Walter Memorial Charitable Fund
 Brad C. Ward Memorial Fund
 Dr. & Mrs. Philip C. Watt Charitable Fund
 Chip Watt Memorial Fund
 Sandy Wiersma Foundation Fund
 Jimmy & Ann Whatley Charitable Fund
 John B. & Elizabeth V. Wight Charitable Fund
 John B. and Elizabeth V. Wight Annuity Fund
 Williams Family Foundation Board Matching Fund
 Williams Family Foundation Conservation & Preservation Fund
 Tommy & Sabrina Williams Charitable Fund
 The Wooty Foundation Fund

A photograph of a wooden bridge spanning a river, with the text "WHERE SMALL CHANGE CAN CHANGE LIVES" overlaid in white capital letters. The image is framed by a solid orange border.

WHERE SMALL CHANGE CAN CHANGE LIVES

MITCHELL EMC CHARITABLE FUND

In 2001, Mitchell Electric Membership Corporation, a non-profit, member owned, electric cooperative established a fund with the Community Foundation of South Georgia to make a charitable difference in the rural communities they serve through their Operation Round Up program. The fund, which is supported through Mitchell EMC rounding the electric bills of participating members up to the nearest dollar, allows them to offer scholarships to students wishing to pursue higher education as well as provide grants to non-profit organizations.

The Mitchell EMC Charitable Fund allows for any non-profit organization in Baker, Dougherty, Mitchell and Worth counties to apply to their unrestricted grant cycle after completing an application. A volunteer committee

meets to review applications quarterly and make disbursements. The fund also provides 12 scholarships annually to students whose primary residence is within the cooperative's service area.

"Operation Round Up is one of the most innovative and visionary programs we have ever sponsored to support our communities," Tony Tucker, CEO of Mitchell EMC says. "We are thankful for those who contribute as well as for those who voluntarily give of themselves to assist with administering the program." Since inception, the members of Mitchell EMC have afforded them with the opportunity to distribute more than one million charitable dollars back into the communities they serve through their relationship with the Community Foundation.

FIELD OF INTEREST FUNDS Allows donors to fund programming and initiatives that support issues of their choosing such as the arts, the environment, education or health.

Christian Missionary Foundation Fund
Community Public Education Fund
DASH for Thomasville, Inc. Fund
Disaster Relief Fund
Donalsonville Lions Club-O.F. and Montez E. Roberts
Foundation for Sight Conservation Fund
Friends of Downtown Thomasville
Charitable Fund
The Garreston Wade Women's
Health Fund
Murray H. Gaskins Sr. Charitable Fund
Grace Recovery Foundation Fund
Grady County Public Education
Endowment
Griffin Church Plant Fund
Harrison Cemetery Preservation Fund

I.T.M. Charitable Fund
Kickin' Cancer Charitable Fund
Lowndes Excellence in Education Fund
Dick Bob Mason Memorial Education Fund
Mitchell Electric Charitable Fund
Mitchell EMC PatCap Fund
One Heartbeat Charitable Fund
Open Arms Foundation Fund
Pelham Community Public Education Fund
Richard & Teresa VanLandingham Maxi
Grant Education Fund
The Smile Fund
Supporting Hands Foundation Fund
Thomas County Children's Dental
Assistance Fund
Valdosta Classical Music Endowment Fund

DESIGNATED FUNDS Donors are able to choose to support a specific nonprofit organization or area of concern during their life and after their death. If an organization ceases to exist, the Foundation redirects support to a similar organization to honor the donor's original intent.

Anonymous Funds
CFSGA Community Fund
CFSGA Real Estate LLC
Community Foundation of South Georgia
General Fund
Community Foundation of South Georgia
Special Fund

First Baptist Church of Thomasville
Charitable Fund
Marvin M., Lorene B. and David Grubbs
Charitable Fund
Thomasville YMCA Gift Annuities Fund
Trinity Anglican Church of Thomasville Fund
Wake Forest University Charitable Fund



SCHOLARSHIP FUNDS Donors are able to establish an educational scholarship for a specific interest or institution. These funds allow them to invest in the future by assisting the best or most needy students pursue higher education.

Zack Alday Memorial Fund
Wyatt Hutchins Alexander Family Scholarship Fund
Attorneys' Title Guaranty Scholarship Fund
Cleve Bostick Memorial Scholarship Fund
Homer E. Breckenridge, Jr. Memorial Scholarship Fund
John Bulloch Scholarship Fund
Cairo High School Band Scholarship &
Endowment Fund
Dr. Lewis F. & Audrey H. Chisholm Healthcare
Scholarship Fund
Coy Williams Memorial Scholarship Fund
Georgia Dental Hygienists' Scholarship Fund
Joanne Pierce Drake Music Scholarship Fund
James D. Eunice Legacy Scholarship Fund
Alan George Memorial YMCA Scholarship Fund
Jacks Gibbs Memorial Scholarship Fund
Griffin Family Scholarship Fund
Doug Henderson III Memorial Scholarship Fund
Rocky Ivey Memorial Scholarship Fund
W.C. Ivey Memorial Scholarship Fund
J.B. Jenkins Memorial Scholarship Fund
Molly Elkins Joiner Memorial Scholarship Fund
Terri Matthews Nursing Scholarship Fund
T.B. McDowell Memorial Scholarship Fund
Senior Chief David Blake McLendon Scholarship Fund
Mitchell EMC Operation Round-Up Scholarship Fund

Mary Kirkland Scholarship Fund for Seminole County
Moultrie-Colquitt County High Schools Alumni
Scholarship Fund
Wh & Mary P. Muggridge Charitable Fund
William J. & Margaret McKay Powell Scholarship Fund
Philip Pugh Memorial Scholarship Fund
QUMC William S. McMichael Memorial
Scholarship Fund
Brian Reagan Memorial Scholarship Fund
Bill Reynolds Memorial Scholarship Fund
Julien B. Roddenbery Scholarship Fund
Thomasville Rotary Club Scholarship Fund
Robert Warde Chambers Scholarship and Public
Education Fund
Candice Sellers Memorial Scholarship Fund
Robert P. "Bobby" Singletary Scholarship Fund
Savannah Singletary Memorial Scholarship Fund
C. M. Stripling Scholarship Fund
C. M. Stripling UGA Forestry Scholarship Fund
Supporting Hands Scholarship Fund
Nicole Taylor Memorial Scholarship Fund
Tucker Baptist Association Scholarship Fund
Valwood School-William G. Eager III Scholarship Fund
Kevin Walden Memorial Scholarship Fund
Dr. Charlie Watt Scholarship Fund
Marie Wertz Scholarship Fund



TRANSFORMING A COMMUNITY THROUGH EDUCATION

ROBERT WARDE CHAMBERS SCHOLARSHIP & PUBLIC EDUCATION FUND

In 2009, the estate of Robert Warde Chambers had a desire to support educational initiatives for future generations in Brooks County. Vann Parrott, an attorney in Quitman and board member of the Community Foundation of South Georgia, believed that the Community Foundation would be a perfect fit to manage these funds and oversee the efforts into perpetuity. After numerous meetings with the estate, the Community Foundation was chosen to be the beneficiary of a \$1 Million gift and the Robert Warde Chambers Scholarship and Public Education Fund was established.

The fund was created with the idea of supporting education in Brooks County through three programs. First, the fund provides scholarships to deserving graduating seniors of Brooks County High School. Second, teachers in the Brooks County School System are

provided an opportunity for continuing education scholarships to promote their continued professional development. Finally, a public education fund was created with the purpose of supporting teacher projects that will improve the quality of the students' educational experience. In its first seven years, the fund has provided over \$370,000 in scholarships to deserving students and teachers in Brooks County and has funded over 60 separate teacher projects in the classroom.

The Community Foundation is excited to have this opportunity to promote educational excellence in Brooks County. The Robert Warde Chambers Scholarship and Public Education Fund will be a catalyst for both students and teachers to reach their highest potential and will play an active role in transforming their community through education.



AGENCY ENDOWMENT FUNDS Nonprofits have the ability to establish an endowment as a means of provision for the future of their work, their mission, their programs, or facility upkeep and maintenance.

Albany ARC People with Disabilities Fund
Albany Area FCA Endowment Fund
Thomasville Antiques Show Endowment Fund
Thomas-Grady ARC Endowment Fund
Birdsong Nature Center General Fund
Camp Arrow Endowment Fund
Aspire Participants Fund
Brooks County Hospital Endowment Fund
Betty Callahan Williams Endowment Fund for the
Thomas County Humane Society
Behavioral Health Services of South Georgia
Consumers Fund
Behavioral Health Services of South Georgia
Endowment Fund
Boys & Girls Clubs of Moultrie/Colquitt Co. Fund
Boys & Girls Clubs of Camilla/Mitchell Co. Fund
MNW Boys & Girls Club of Thomas County Fund
Birdsong Nature Center Endowment Fund
Bishop Hall Charitable Fund
Community Soup Kitchen Endowment Fund
Easter Seals Southern Georgia Fund
First Presbyterian Church of Thomasville
Planned Giving Fund
First Presbyterian Church of Thomasville Planned
Giving - Sisson Music Fund
First Presbyterian Church of Valdosta
Endowment Fund
First Presbyterian Church of Valdosta-Break
Bread Together Fund
First Presbyterian Church of Moultrie
Endowment Fund
First Presbyterian Church of Moultrie-Eugene M.
Vereen, Jr. Education Fund
Friends of Cherokee Lake Fund
Fulwood Garden Center Endowment Fund
First United Methodist Church of Cairo Fund
First United Methodist Church of Thomasville
Georgia Endowment Fund
Georgia Pines Consumers Fund
Thomasville Garden Club Capital Fund
Thomasville Garden Club Endowment Fund
Thomasville Garden Club Spending Fund
Grady General Hospital Endowment Fund
Grace Christian Academy Endowment Fund
Hand Memorial United Methodist Church Fund
Hands & Hearts for Horses Endowment Fund
Hands & Hearts for Horses Operating Fund
Thomas Co Historical Society Bldg & Grounds
Endowment Fund

Thomas County Historical Society Endowment Fund
Hands On Thomas County Endowment Fund
Thomasville Landmarks Building & Grounds
Endowment Fund
Thomasville Landmarks Endowment Fund
Mitchell County Hospital Capital Fund
Mitchell County Hospital Endowment Fund
Thomasville Music & Drama Troupe Fund
Nepenthic Society Endowment Fund
Open Door Charitable Fund
Open Future Endowment Fund
Options Now Building & Grounds Endowment Fund
Randolph County Schools Charitable Fund
Roddenbery Library - Automation Fund
Roddenbery Memorial Library Building &
Maintenance Fund
Roddenbery Library - Endowment Fund
Roddenbery Library - Minnie G. Wight Garden Fund
Roddenbery Library - Jefferson Book Fund
Roddenbery Library - Wessie Connell Scholarship Fund
Roddenbery Library - Mary Wyatt Memorial Fund
Roddenbery Memorial Library Futures Fund
Second Harvest of South Georgia, Inc
Endowment Fund
South Georgia Pediatric Charitable Fund
Strive2Thrive, Inc. Endowment Fund
Southern Regional Technical College Foundation Fund
Thomas Area Soccer Association Fund
Thomasville Center for the Arts Building and
Maintenance Fund
Thomasville Center for the Arts Capital Fund
Thomas County Public Library Endowment Fund
Thomasville Community Resource Center Fund
Thomasville Community Resource Center-Wade Fund
Tree House of Thomasville Fund
Thomasville Primitive Baptist Church Foundation Fund
Turner Center for the Arts-Hudson Fund
Turner Center for the Arts Endowment Fund
Valwood School Endowment Fund
Valwood School-Joe E. Vallotton Enrichment
Memorial Fund
Vashti Center Endowment Fund
Wesley Chapel Endowment Fund
Westbrook School Endowment Fund
Westwood School Endowment Fund
Thomasville YMCA Endowment Fund

PLANNED GIVING

BEQUESTS The most common way to make a lasting gift. Any type of fund can be the beneficiary of a designated gift through your will.

CHARITABLE GIFT ANNUITIES In exchange for a gift, usually cash or stock, the Community Foundation pays the donor (and/or the donor's spouse) a fixed amount on an annual basis, usually for the life of the donor. After death, the remainder can be used as a memorial fund to benefit charities of the donor's choice.

CHARITABLE REMAINDER TRUSTS A beneficial life income plan that allows for an immediate income tax deduction, reduction in estate taxes, a way to generate more income from investments, provide for a spouse and possibly eliminate capital gain taxes. Along with all of these benefits, donors are also able to make a gift that will benefit charities of their choice in perpetuity.



CHARITABLE LEAD TRUSTS Enables donors to make significant gifts into a trust that pays annual income to the Foundation while eventually transferring substantial assets to beneficiaries that may benefit from lowered gift and estate taxes.

LIFE ESTATE/ DEED OF RESIDENCE WITH RETENTION You may deed your home (or other real estate) to a fund at the Community Foundation, retaining a life estate. You will be entitled to a current year charitable income tax deduction even though you will continue to live in your home for the rest of your life and the value of the house will be excluded from your taxable estate.

IRA / RETIREMENT PLAN ASSETS If you have already created a sound estate plan that achieves all objectives and takes care of your family, using an IRA to make a current gift or a gift-by-will could avoid both income and estate taxes. A current gift of your IRA can be used to establish a Designated Fund to support a specific charity or charities of your choice. A gift of your IRA in your will can be used to establish a Donor Advised Fund which will allow your family to remain involved in the grant making process into perpetuity.



A FAMILY LEGACY OF SELFLESS GIVING

ANONYMOUS FUNDS

The Community Foundation is honored to serve the various philanthropic interests of a family that desires to take care of the needs of their community without the need for notoriety or recognition. Several years ago, this family started multiple funds that would encompass so much of what the Community Foundation of South Georgia is able to do for those who wish to give charitably. They discovered a vehicle for regular giving through their donor advised funds, an endowment for a charity that they are passionate about, a scholarship to assist individuals in pursuing education, and legacy and estate planning for future generations of their family. With the ability to prioritize and plan their giving, this family has been able

to make their giving intentional, impactful, and flexible for decades to come.

With a prior generation who set a strong foundation for reaching out and giving, the current generation learned what a joy it was to give and found that what the Community Foundation offered them is a way to do so easily and even anonymously. CFSGA gives them the ability to express their affinity for education, spreading the gospel, helping those less fortunate and addressing community needs as they arise. One family member explained, “The Community Foundation has been a great resource for our family in helping us give more to make a difference in the lives of others and we’re excited about being able to do more in the long term.”



Photo by Bud Bostick, courtesy of Tall Timbers Research Station & Land Conservancy

STATEMENT OF FINANCIAL POSITION

DECEMBER 31, 2015

ASSETS

>> CURRENT ASSETS

CASH AND CASH EQUIVALENTS	\$	9,663,607
MARKETABLE SECURITIES		42,186,867
INVESTMENT INCOME RECEIVABLE		42,406

TOTAL CURRENT ASSETS	\$	51,892,880
----------------------	----	------------

>> OFFICE EQUIPMENT, NET OF ACCUMULATED DEPRECIATION

266,656

>> OTHER ASSETS

OTHER RECEIVABLES	\$	194,288
OTHER ASSETS		3,500

TOTAL OTHER ASSETS	\$	197,788
--------------------	----	---------

TOTAL ASSETS	\$	52,357,324
--------------	----	------------

LIABILITIES & NET ASSETS

>> LIABILITIES

NOTES PAYABLE	\$	168,884
GIFT ANNUITY PAYABLE		118,384
FUNDS HELD AS NONPROFIT AGENCY-ENDOWMENTS		8,039,649

TOTAL LIABILITIES	\$	8,326,917
-------------------	----	-----------

>> NET ASSETS

UNRESTRICTED:

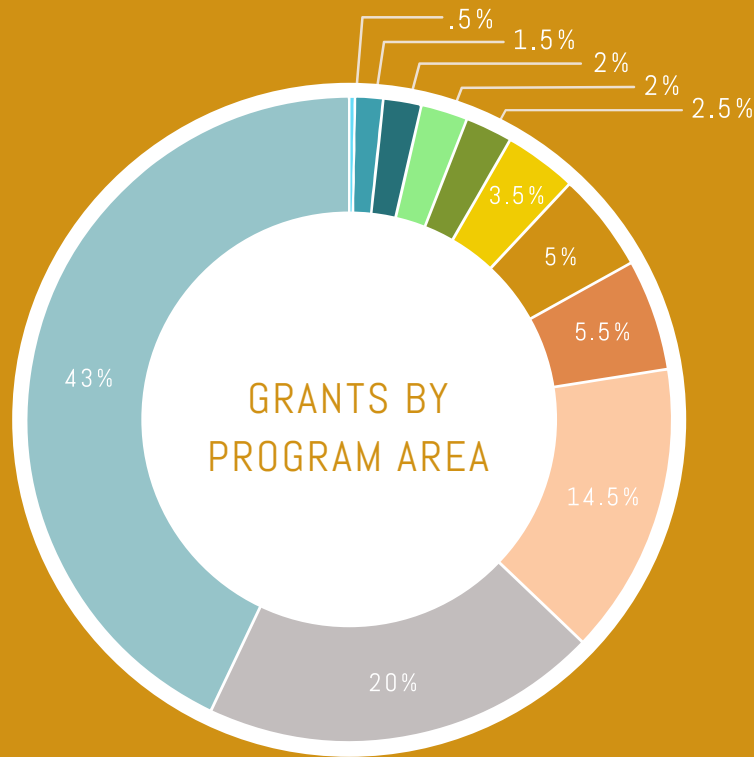
DESIGNATED	\$	6,224,580
DONOR ADVISED		30,642,748
SCHOLARSHIP		2,435,061
FIELD OF INTEREST		3,854,934
OTHER UNRESTRICTED		414,600

TOTAL UNRESTRICTED	\$	43,571,923
--------------------	----	------------

TEMPORARILY RESTRICTED	\$	458,484
------------------------	----	---------

>> TOTAL LIABILITIES AND NET ASSETS	\$	52,357,324
-------------------------------------	----	------------





GRANT NO.	PROGRAM AREA	\$ GIVEN
3	DISASTER RELIEF	\$19,100
54	HISTORIC PRESERVATION	\$94,480
49	FOOD & NUTRITION	\$128,500
63	ENVIRONMENTAL	\$158,000
64	COMMUNITY & ECONOMIC DEV.	\$159,400
22	HOUSING & SHELTER	\$245,900
143	YOUTH DEVELOPMENT	\$334,200
53	ARTS & CULTURE	\$375,200
369	HEALTH & HUMAN SERVICES	\$984,300
418	EDUCATIONAL	\$1,341,300
550	FAITH BASED	\$2,890,800

OUR STAFF



David Carlton,
President



Lisa Hitt,
Controller



Claire Bowen,
Donor Services
Associate

BOARD OF DIRECTORS

Russ Henry, **Chairman**
Vann Parrott, **Vice Chairman**
George Lilly, **Secretary**
John McDuffie, **Treasurer**

COUNTY

Lowndes
Brooks
Thomas
Dougherty

Jimmy Allen
Bill Burke
David Cone
Ann Hopkins
Dan Jeter
John McTier
John Prince
Beth Stripling
Laura Tucker
Randy Wages
Cile Warr
Alston Watt
Jo Wingate

Tift
Seminole
Thomas
Grady
Colquitt
Lowndes
Tift
Colquitt
Mitchell
Dougherty
Decatur
Thomas
Irwin



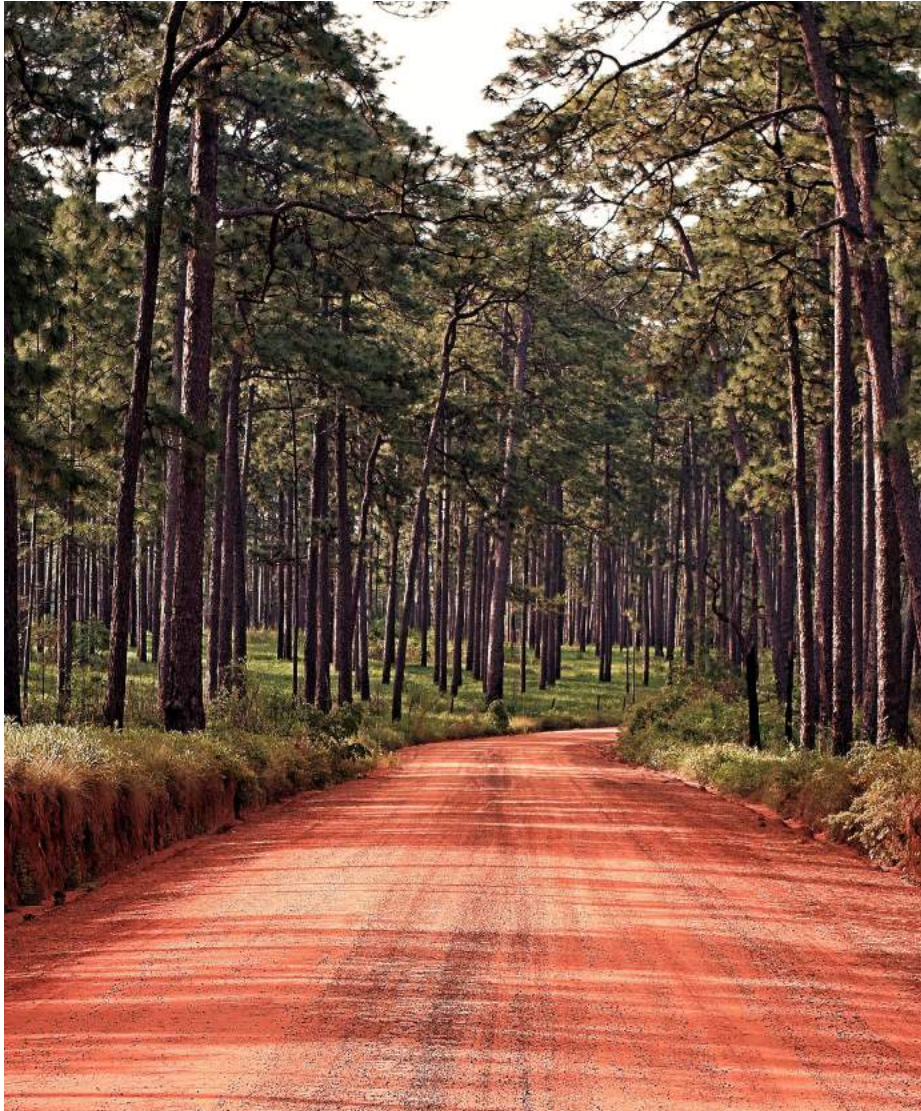
“

You make a living by what
you do, you make a life by
what you do for others.

”



SERVING 35 COUNTIES IN SOUTH GEORGIA



114 West Jackson Street | Thomasville, GA 31792
(229) 228.5088 | cfsga.net | Find us on Facebook! @cfsga



Brand + Design
fontainemaury.com