

*Celebrating
over 15 years
of service to the
South Georgia
Community*



2011 ANNUAL REPORT



Multiplying the Gift, Maximizing the Impact

Celebrating over 15 years of Giving by Our Community to Our Community

Our Vision To be the recognized resource for assisting donors and nonprofit organizations meet community needs forever.

Our Mission To be a catalyst for the establishment of charitable funds which benefit the community for generations to come.
To provide leadership and resources in identifying and meeting local needs.
To promote local philanthropy.
To serve the varied interests and needs of donors.

Our Goals To build relationships.
To create a passion for community change.
To encourage giving.
To inspire action.
To improve the quality of life for South Georgia.



*Multiplying the Gift
Maximizing the Impact*

Dear Friends,

In 2011, the Community Foundation of South Georgia celebrated over 15 years of service to individuals, families, businesses, and non-profit organizations throughout South Georgia. With our first contributions received in 1996, we began a partnership with our people and our communities that is truly worthy of a celebration. We have been honored to join with our friends in promoting philanthropy and recognizing the joy that comes from giving and serving others in our area.

Our Community Foundation was originally founded under the original name of the Community Foundation of Southwest Georgia by a group of visionaries, with a mission to establish a vehicle for charitable giving to enhance the quality of life in South Georgia. In 2006, we officially changed our name to the Community Foundation of South Georgia as we assumed the name, territory and responsibilities of the Valdosta-based Community Foundation that had been dissolved. This move increased our service area to an amazing 35 counties throughout South Georgia.

We have come a long way and accomplished much over the last 15 years. As of the end of 2011, the total assets of the Community Foundation were over \$52 million. In 2011, twenty-seven new funds were established which brought the total number of funds under management to 275. Also, in 2011 alone, we were able to grant over \$9.6 million to charities throughout South Georgia and the United States, the highest year of grants in our history. This brought our overall grants since inception to an astounding \$53 Million. *Now those are certainly reasons to celebrate!*

Looking forward, we are committed to serving the philanthropic needs of our communities, and to further increase our presence into our extended service area.

We would like to thank our founders, all current and past Board Members, the numerous donors and the non-profits that have chosen to give to and through the Community Foundation for over 15 years. Thanks to all of your efforts, we have been able to further the mission of the Community Foundation and to showcase the tremendous heart of philanthropy that beats inside the people of South Georgia.

Let's Celebrate!

Sincerely,

Randall E. Wages
Randy Wages, Chairman

David M. Carlton
David Carlton, President



Our Funds

New Funds in 2011

Stephen R. & Anne H. Avera Charitable Fund
David & Vicky Bosse Charitable Fund
Chris & Amy Cooper Family Charitable Fund
Wayne Damron Family Charitable Fund
Danny & Samantha DeMersseman Foundation Fund
Duncan-Flores Foundation Fund
James D. Eunice Dive Fund
James D. Eunice Scholarship Fund
Murray H. Gaskins Sr. Charitable Fund
Jacks Gibbs Memorial Scholarship Fund
Grace Recovery Home Endowment Fund
Grimsley-Forsyth Charitable Fund
Kickin' Cancer Charitable Fund
Olive You Charitable Fund
Vann & Lauri Parrott Charitable Fund
Pregnancy Support Clinic of Valdosta Capital Campaign Fund
Pregnancy Support Clinic of Valdosta Reserve Fund
Brian Reagan Memorial Scholarship Fund
Thomas & Katie Reed Family Charitable Fund
Thomasville Rotary On to Graduation Fund
Seminole County Recreation Fund
Savannah Singletary Memorial Fund
Thomasville Center for the Arts Building Endowment Fund
Richard S. & Anna A. Vann Charitable Fund
Tommy & Janine Vann Charitable Fund
Tony & Lisa Wages Charitable Fund
Brad C. Ward Memorial Fund

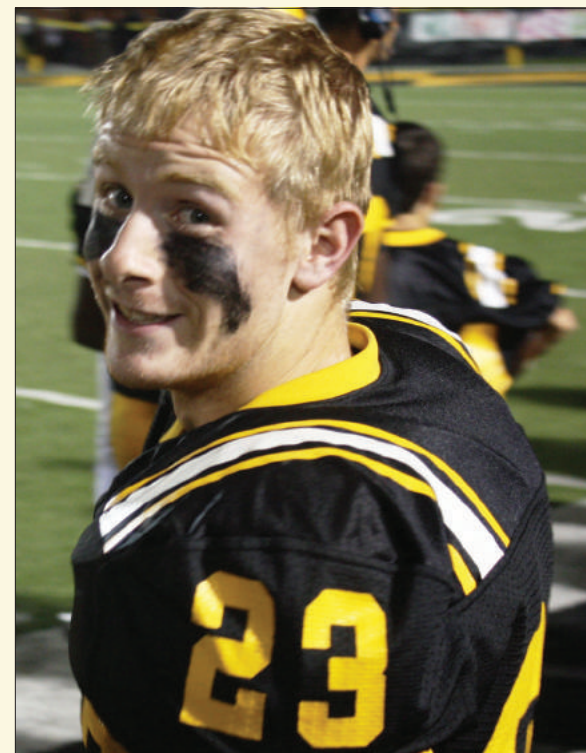
James D. Eunice Dive Fund and Scholarship Fund

In 2011, the Community Foundation helped celebrate the life and legacy of James Eunice. On January 15, 2011, James disappeared while duck hunting with a friend in Lowndes County, Georgia. Over the next 16 days, we saw a community united, as multiple public service organizations, dozens of dive teams, United States military units and hundreds of volunteers descended on Ocean Pond to assist, offer comfort, serve a hot meal or just hope and pray for James and his family.

On January 31, divers from the 23rd Wing at Moody Air Force Base recovered James, and a purpose and ministry were born. Within the next few days, John and Tammy Eunice were introduced to the staff at the Community Foundation. That introduction led to the establishment of the James Eunice Dive Fund that would assist in meeting local needs and enable James' legacy of faith, unconditional love, sharing and giving back to live on.

Within four months of establishment of the fund, local businesses, churches, volunteers within the community and the family raised more than \$144,000. The Eunice family donated these funds to the Lowndes County Sheriff's Department to purchase dive gear, communications, a dive boat and underwater SONAR to ensure that no other family in the southeast would have to endure such a wait to locate a loved one in a water recovery situation.

After the initial goal of equipping one of the largest dive teams in the southeast was complete, the community and family established the James Eunice Scholarship Fund and the James Eunice Charitable Fund. James' name and legacy live on through the help of the community and the Foundation, as we celebrate how he lived and the lives that continue to be changed by his life and legacy.





Agency Endowment Funds

Anonymous Funds
Albany ARC People with Disabilities Fund
Albany Area FCA Fund
Thomas-Grady ARC Fund
Bainbridge College Foundation Charitable Fund
Camp Arrow Fund
Brooks County Hospital Fund
Betty Callahan Williams Fund for the Thomasville
Thomas County Humane Society
Boys & Girls Clubs of Camilla/Mitchell County Fund
Marguerite Neel Williams Boys & Girls Club of
Thomas County Fund
Birdsong Nature Center Fund
Bishop Hall Charitable Fund
Thomasville Christian School Fund
Community Soup Kitchen Fund
Easter Seals Southern Georgia Fund
First Presbyterian Church of Moultrie - Frank R.
Pidcock Fund
First Presbyterian Church of Valdosta Fund
Fulwood Garden Center Fund
First United Methodist Church of Cairo Fund
First United Methodist Church of Thomasville Fund
Thomasville Garden Club Fund
Thomasville Garden Club Spending Fund

Grady General Hospital Fund
Grace Christian Academy Fund
Grace Recovery Home Fund
Grace Recovery Home Capital Fund
Hand Memorial United Methodist Church Fund
Hands & Hearts for Horses Fund
Hands & Hearts for Horses Operating Fund
Thomas County Historical Society Building &
Grounds Fund
Thomas County Historical Society Fund
Thomasville Landmarks Building & Grounds Fund
Thomasville Landmarks Fund
Miller County Courthouse Capital Fund
Mitchell County Hospital Fund
Mitchell County Hospital Capital Fund
Mustard Seed House Fund
Mustard Seed House Capital Fund
Thomasville Music & Drama Troupe Fund
Nepenthic Society Fund
Open Door Capital Campaign Fund
Open Door Charitable Fund
Pregnancy Center of SW Georgia Fund
Pregnancy Center of SW Georgia-Cairo Fund
Pregnancy Support Clinic of Valdosta Capital Fund
Pregnancy Support Clinic of Valdosta Reserve Fund
Quail Country Chapter of Quail Unlimited Inc. Fund

Randolph County Schools Charitable Fund
Roddenbery Library - Automation Fund
Roddenbery Library - Endowment Fund
Roddenbery Library - Minnie G. Wight Fund
Roddenbery Library - Jefferson Book Fund
Roddenbery Library - Wessie Connell Fund
Roddenbery Memorial Library Futures Fund
Safe Haven Charitable Fund
Second Harvest of South Georgia, Inc. Fund
The Stepping Stone Charitable Fund
Southwest Georgia Technical College Foundation Fund
Southwestern State Hospital Foundation Fund
Southwestern State Hospital Patients Fund
Thomas Area Soccer Association Fund
Thomasville Center for the Arts Building Fund
Thomas County Public Library Fund
Tree House of Thomasville Fund
Turner Center for the Arts Fund
Turner Center for the Arts - Hudson Fund
Valwood School Fund
Valwood School - Joe E. Vallotton Memorial Fund
Vashti Center Fund
Westbrook School Fund
Westwood School Fund
Thomasville YMCA Fund



Designated Funds

Anonymous Funds
Community Foundation of South Georgia General Fund
Community Foundation of South Georgia Special Fund
James D. Eunice Dive Fund
First Baptist Church of Camilla Fund
First Baptist Church of Thomasville Fund
Friends of Cherokee Lake Fund

Marvin M., Lorene B. & David Grubbs Charitable Fund
Cleo & Roz Herndon Missions Fund
Thomasville Rotary Club Leukemia Fund
Seminole County Recreation Fund
Albany Area Strive 2 Thrive Fund
Thomasville YMCA Gift Annuities Fund



Donor Advised Funds

Anonymous Funds

Dr. & Mrs. D.W. Adcock Charitable Fund
Jaimie & Lynne Allen Charitable Fund
Jimmy & Quay Allen Charitable Fund
Ambling Companies, Inc. Charitable Fund
Margaret G. Anderson Charitable Fund
Thomasville Antiques Show Foundation Fund
Stephen R. & Anne H. Avera Charitable Fund
Balfour Foundation Fund
Balfour Lumber Company Charitable Fund
Beadles Lumber Company Foundation Fund
Joe & Mary Beverly Charitable Fund
Warren Bicknell, III & Elizabeth H. Bicknell Charitable Fund
David & Vicky Bosse Charitable Fund
Cleve Bostick Memorial Fund
Chip & Kim Bragg Family Charitable Fund
Ann O. Brown Annuity Fund
Helen & Lumis Brown Charitable Fund
Change for Children Charitable Fund
Chason Family Charitable Fund
Cherokee Foundation - Bicknell Fund
Cherokee Foundation - Firman Fund
Cherokee Foundation - General Fund
Cherokee Foundation - Sedgwick Fund

Cherokee Foundation - Singletary Fund
Lee & Russell Chubb Fund
CJB Family Charitable Fund
CK Fund
Chris & Amy Cooper Family Charitable Fund
John & Anna Carlton Charitable Fund
Mac Crutchfield Memorial Fund
Wayne Damron Family Charitable Fund
Dr. David Daniel Memorial Fund
Jasper & Marthalene Davis Foundation Fund
Danny & Samantha DeMersseman Foundation Fund
Destiny Foundation Fund
Diane Hight Hall Memorial Fund
Duncan - Flores Foundation Fund
Equity Group - Georgia Division, LLC Charitable Fund
Eddie Taylor Foundation Fund
Fenlon Family Charitable Fund
The Fifth Friday Foundation Fund
Jay & Kim Flowers Family Foundation Fund
Flowers Family Charitable Fund
Langdon S. & Margaret P. Flowers Charitable Fund
Kathleen Vignos Folsom Charitable Fund
Fowler Family Charitable Fund

Ann G. Friedlander Charitable Fund
Jacqueline & Matt Friedlander Charitable Fund
Joshua P. Geihlsler Fund
George & Nell Lane Charitable Fund
Dr. Ben Grace Fund
R. A. Griffin Jr. & Barbara T. Griffin Charitable Fund
R. A. Griffin Family Foundation Fund
Grimsley - Forsyth Charitable Fund
Vivian Hays Guthrie Charitable Fund
Haney Family Charitable Fund
Mike & Leslie Harrell Charitable Fund
Higdon Family Charitable Fund
Justin T. Hobdy Memorial Fund
Honey Creek Foundation Fund
Daniel B. & Felicity S. Jeter Charitable Fund
James M. & Rosalind T. Jeter Charitable Fund
Joyce Mills Whitfield Memorial Fund
Bob Jones Family Charitable Fund
Harry T. Jones Family Fund
Jamie Watt Jones Charitable Fund
William Powell & Caren McKenzie Jones Charitable Fund
Clint & Alane Kadel Charitable Fund
Kendrick Foundation Fund
Mabel V. Kral Charitable Fund
Bernie & Kathy Lanigan Charitable Fund
J. Christopher Lanigan Charitable Fund



Scholarship Funds

Zack Alday Memorial Fund
Wyatt Hutchins Alexander Family Scholarship Fund
Attorneys' Title Guaranty Scholarship Fund
Bainbridge College Foundation - Virginia Lee Rozier Memorial Scholarship Fund
Bainbridge College Foundation - Whittington-Wilkerson Family Scholarship Fund
Cleve Bostick Memorial Scholarship Fund

Homer E. Breckenridge, Jr. Memorial Scholarship Fund
Cairo High School Band Scholarship & Endowment Fund
Coy Williams Basketball Scholarship Fund
Davenport Family Scholarship Fund
Georgia Dental Hygienists' Scholarship Fund
James D. Eunice Scholarship Fund
Hannah Fesperman Memorial Scholarship Fund

Alan George Memorial YMCA Scholarship Fund
Jacks Gibbs Memorial Scholarship Fund
Griffin Family Scholarship Fund
Doug Henderson, III Memorial Scholarship Fund
Rocky Ivey Memorial Scholarship Fund
W.C. Ivey Memorial Scholarship Fund
J.B. Jenkins Memorial Scholarship Fund
Jeanette Williams Memorial Scholarship Fund
Mitchell EMC Operation Round-Up Scholarship Fund



Field-of-Interest Funds

Lanigan CPA Partners & Southeast Asset Advisors Fund
Phillip & Karen Leabo Charitable Fund
Jerry Maxwell Charitable Fund
Medical Benevolence Foundation Fund
Milberg Family Charitable Fund
Wade & Jill Miller Charitable Fund
Mustard Seed Fund
Bruce & Dawn Muller Charitable Fund
Jim Neill Memorial Foundation Fund
Jo Oakley Nesbitt Foundation Fund
Mr. & Mrs. William U. Norwood, III Charitable Fund
Olive You Charitable Fund
Paracca Family Charitable Fund
J. Mark & Carson H. Parker Charitable Fund
Diane W. Parker Charitable Fund
Joe & Frances Parker Charitable Fund
Vann & Lauri Parrott Charitable Fund
Dr. John Payne Advocates for Animals Fund
Thomas E. Perry Fund
Frank R. Pidcock Foundation Fund
William R. & Joann B. Ponder Charitable Fund
Thomas & Katie Reed Family Charitable Fund
Margarett W. Roddenbery Charitable Fund
Ruby Stephens Worldwide Missions Fund
The Scott Family Fund
Mr. & Mrs. David Scott Charitable Fund

Richard L. & Kay Singletary Charitable Fund
Savannah Singletary Memorial Fund
Effie R. & Rogers G. Streetman Charitable Fund
Stripling Charitable Foundation Fund
Tallokas Foundation Charitable Fund
Pete Thomas Fund
Together We Can Charitable Fund
Jerry & Marta Turner Charitable Fund
Tyson - Hopkins Charitable Fund
Hosea Hall Vann & Lilly Eason Vann Charitable Fund
Laura & Jud Vann Charitable Fund
Richard S. & Anna A. Vann Charitable Fund
Tommy & Janine Vann Charitable Fund
Heeth & Jacqueline Varnedoe Charitable Fund
Randy & Susan Wages Family Charitable Fund
Tony & Lisa Wages Charitable Fund
Rick & Sharon Wagner Charitable Fund
Brad & Jackie Walter Charitable Fund
Ward & Barbara Walter Memorial Fund
Brad C. Ward Memorial Fund
Dr. & Mrs. Philip C. Watt Charitable Fund
John B. & Elizabeth V. Wight Charitable Fund
John B. & Elizabeth V. Wight Annuity Fund
Williams Family Foundation Board Matching Fund
Williams Family Foundation Conservation and Preservation Fund
Tommy & Sabrina Williams Charitable Fund
The Wooty Foundation Fund

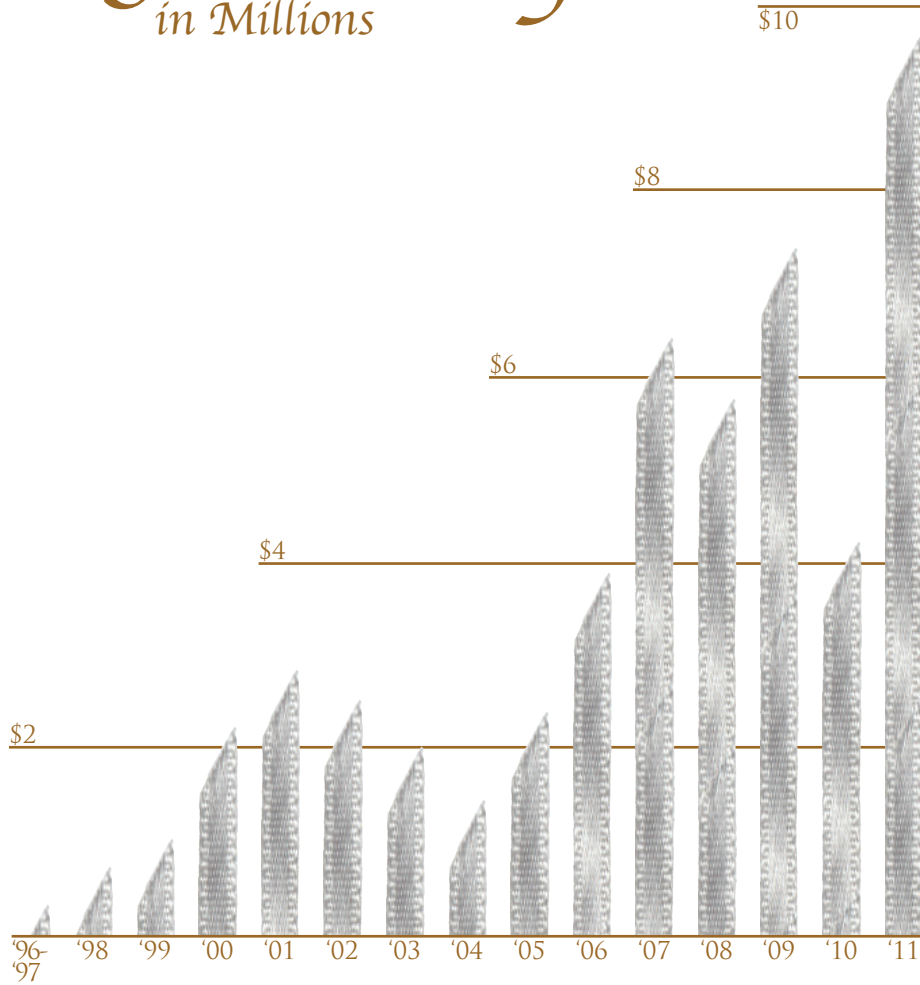
Mary Kirkland Scholarship Fund for Seminole County High School
Philip Pugh Memorial Scholarship Fund
Brian Reagan Memorial Scholarship Fund
Bill Reynolds Memorial Scholarship Fund
Julien B. Roddenbery Scholarship Fund
Thomasville Rotary On to Graduation Fund
Thomasville Rotary Club Scholarship Fund
Robert Warde Chambers Scholarship & Public Education Fund
Candice Sellers Memorial Scholarship Fund

C. M. Stripling Scholarship Fund
C. M. Stripling UGA Forestry Scholarship Fund
Nicole Taylor Memorial Scholarship Fund
Tucker Baptist Association Scholarship Fund
Valwood School - William G. Eager, III Scholarship Fund
Dr. Charlie Watt Scholarship Fund
Marie Wertz Scholarship Fund
Chip Wiggins Memorial Scholarship Fund

Brooks County Friends of Animals Fund
Christian Missionary Foundation Fund
DASH for Thomasville Fund
Donalsonville Lions Club - O.F. & Montez Roberts Foundation for Sight Preservation
Disaster Relief Fund
Murray H. Gaskins Sr. Charitable Fund
Griffin Church Plant Fund
Harrison Cemetery Preservation Fund
Kickin' Cancer Charitable Fund
Lead the Poor Foundation Fund
Dick Bob Mason Memorial Education Fund
Mitchell Electric Charitable General Fund
Mitchell Electric Charitable Reserve Fund
One Heartbeat Charitable Fund
Open Arms Foundation Fund
Grady County Public Education Endowment Fund
Grady County Public Education-Molly Joiner Memorial Fund
Richard & Teresa VanLandingham Maxi Grant Education Fund
Pelham Community Public Education Fund
Community Public Education Fund
Thomas County Children's Dental Assistance Fund

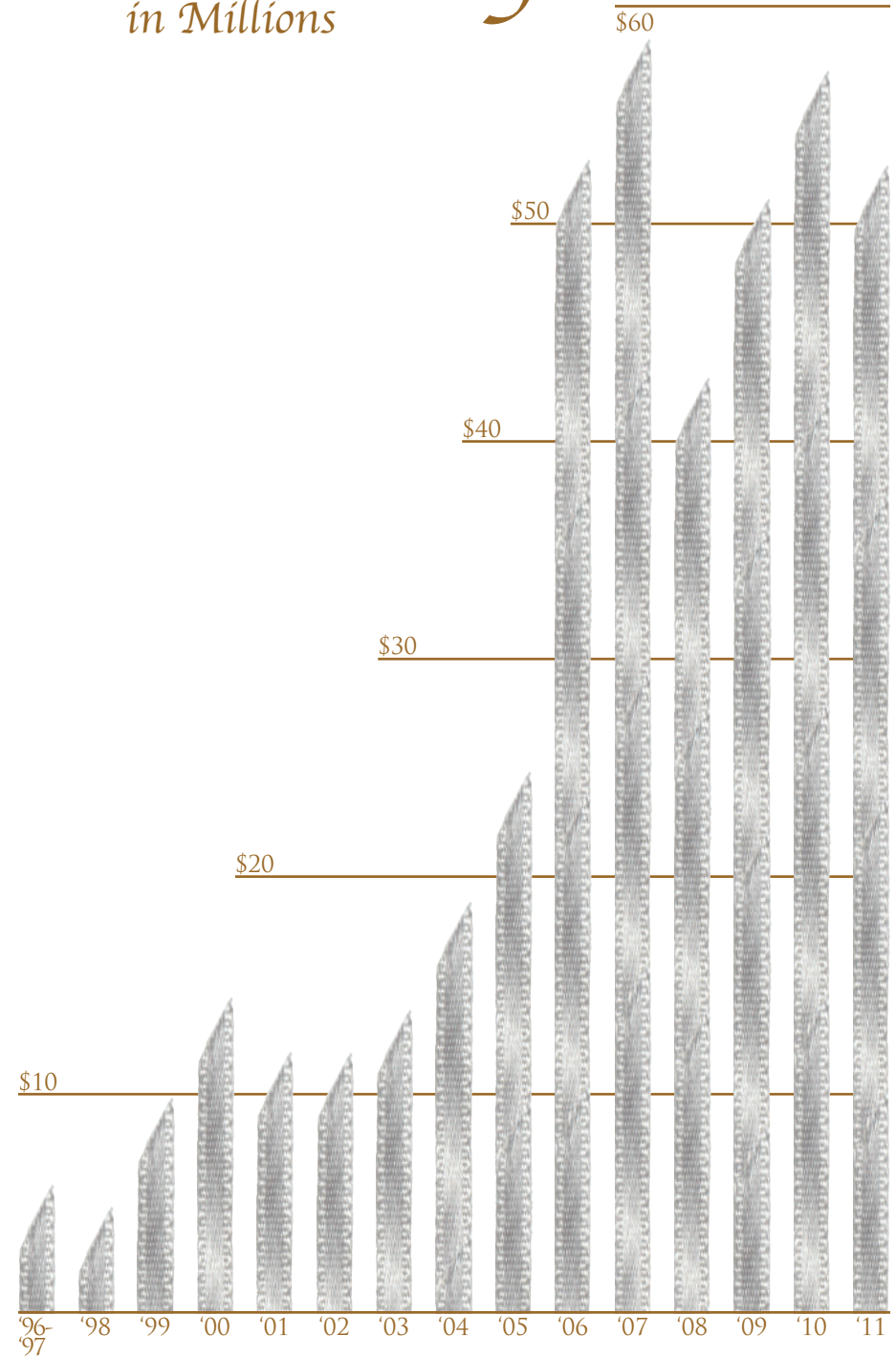
Grants by Year

in Millions



Assets by Year

in Millions



Assets

Current Assets

Cash, including certificates of deposit	\$ 10,239,708
Marketable securities	42,247,081
Investment income receivable	<u>50,758</u>

Total Current Assets 52,537,547

Office Equipment, net of accumulated depreciation 373

Other Assets

Other receivables	178,113
Other assets	<u>3,500</u>

Total Other Assets 181,613

Total Assets \$ 52,719,533

Liabilities and Net Assets

Liabilities

Accounts payable	\$ 8,355
Gift annuity payable	178,785
Funds held as nonprofit agency endowments	<u>22,593,862</u>

Total Liabilities 22,781,002

Net Assets

Unrestricted:

Designated	5,684,997
Donor advised	20,885,055
Scholarship	1,916,900
Field of interest	879,181
Other unrestricted	<u>183,194</u>

Total unrestricted 29,549,327

Temporarily restricted 389,204

Total Liabilities and Net Assets \$ 52,719,533

Statement of Financial Position

DECEMBER 31, 2011





Mrs. Marjory O. Nesbitt

On November 3, 2011, the Community Foundation celebrated the life, legacy and lasting gifts through the Planned Giving of Mrs. Marjory O. Nesbitt as she left this earth and passed on into her eternal resting place in heaven.

Mrs. Nesbitt was introduced to the Community Foundation by her professional advisors and trusted friends in the summer of 2004. As a result of that introduction, Mrs. Nesbitt established two funds at the Community Foundation, the Jo Oakley Nesbitt Foundation Fund and the Jo Oakley Nesbitt Annuity Fund. Through the Community Foundation, Mrs. Nesbitt made the arrangements that her foundation fund was to benefit one organization in South Georgia for a period of 20 years, beginning in 2004. However, upon her passing, the terms and distributions changed.

We celebrate the life of Mrs. Nesbitt and her lasting gifts and legacy through the stewardship, announcement and distributions to eight recipient organizations that will receive annual grants in her honor and memory for the next 20 years. What an exciting time it was for these organizations to learn that she had made provisions for them. Some of the organizations used these grants to launch their own planned giving materials and campaign for their other supporters.

Mrs. Nesbitt's Charitable Gift Annuity Fund was established with the love of her charitable aspirations, organizations and her family in mind. By working with the Community Foundation to *multiply her gift and maximize the impact*, the annuity fund is able to provide income for life for a family member as well as support the charitable organizations she determined to receive her planned gift. We humbly honor Mrs. Nesbitt in this year's annual report to the community, celebrating her decision to plan her gifts, and legacy through the Community Foundation of South Georgia, and thank those of our other donors who have included us in their planned giving platform.

Legacy Living Through Planned Giving

Planned Giving refers to any type of gift that requires consideration and planning before given. There are numerous planned giving vehicles that allow a gift to be tailored to meet a donor's needs or desires. Planned Giving assures long term growth and provision. Having the correct plan for you will balance what you wish to accomplish for yourself, your family, and your charitable interests in your overall estate plans.



Benefits of Planned Gifts:

- Lifetime income possibilities
- Avoiding capital gains taxes
- Reduction of estate and or income taxes
- Simplicity of asset transfer to loved ones
- Ability to make significant, meaningful and permanent gifts to your charity
- Increase current income to self or others

Types of Planned Gifts

Bequest

When donors decide to leave assets to charities in their will, they are making a bequest and their estate will receive the tax deduction at their death.

Retained Life Estate

A donor may make a gift of a personal residence or farm to charity and retain the right to live there for the remainder of his or her life. The donor receives the tax deduction for the gift and at the donor's death, the charity can use or sell the property.

IRA Retirement Plan

A 401(k), 403 (b), IRA, or other such account, if passed on to heirs, are heavily taxed. The Community Foundation can be named as the beneficiary of a retirement plan to benefit a charitable organization through the donors' fund removing the tax burden from the donor's estate.

Life Insurance

A policy that may have been held for many years and is no longer needed for the financial security of his/her heirs or establishing a new policy can also be a giving opportunity. The Community Foundation can be named as the owner and beneficiary of the policy and since the Community Foundation becomes the owner of the policy, the proceeds will not be included in your estate for tax purposes. Tax deductible contributions can be made to cover the premium and a fund is established to support the donor's charitable goals in perpetuity.

Gift Annuity

A gift annuity is a contract between the Foundation and a donor. In return for a donation of cash or other assets, the Foundation agrees to pay a fixed payment for life to the donor or to a friend or family member of the donor's choosing. The donor can claim a charitable tax deduction and if a donor funds a gift annuity with long-term capital gain property, the donor will have to report only some of the gain, and may be able to report it in installments over many years.

Charitable Lead Trust

This trust makes payments, either a fixed amount (annuity trust) or a percentage of trust principal (unitrust), to charity during its term. At the end of the trust term, the principal can either go back to the donor (a grantor lead trust) or to heirs named by the donor.

Charitable Remainder Trust

This trust makes payments, either a fixed amount (annuity trust) or a percentage of trust principal (unitrust), to whomever the donor chooses to receive income. The donor may claim a charitable income tax deduction and may not have to pay any capital gains tax if the gift is of appreciated property. At the end of the trust term, the charity receives whatever amount is left in the trust.





Our Grantees

AAU
Abraham Baldwin Agricultural College
ACTO of Valdosta, Inc.
ACTS 29 Ministries
African Wildlife Foundation
Agnes Scott College
Alabaster Jar Ministries
Albany Advocacy Resource Center
Albany Area Arts Council Inc.
Albany Chamber Foundation, Inc.
Albany Humane Society
Albany State University
Albany Technical Foundation, Inc.
All Saints Episcopal Church
Alpha School, Inc.
Alzheimer's Association of Georgia
The Alzheimers Project Inc.
American Cancer Society
American Diabetes Association
American Heart Association
The American Jewish Committee
American Red Cross
American Red Cross - Atlanta
American Red Cross - Flint River Chapter
American Red Cross - Thomasville
American Red Cross - Valdosta Chapter
An Open Door Adoption Agency, Inc.
Anderson University
Anti-Defamation League

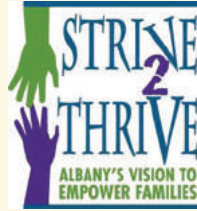
National Arbor Day Foundation
ARC of Thomas/Grady County, Inc.
ARCH Foundation
Archbold Foundation
Archbold Medical Center
Armstrong Atlantic State University
Armstrong Atlantic State University Foundation
Asbury Theological Seminary
Ashley Inc.
Atlanta Botanical Garden Inc.
Atlanta Community Symphony Orchestra
Atlanta Youth Academy
Atlanta - Fulton County Zoo Inc.
Atlantic Salmon Federation
Auburn University
Baconton Charter School
Baconton Fire Department
Bainbridge College
The Bascom Corporation
Birdsong Nature Center
Birthright of Valdosta
Bishop Hall Charter School
Boy Scouts of America
Boy Scouts of America Alapaha Area Council
Boy Scouts of America Suwannee Area Council
Boys & Girls Clubs of Albany
Boys & Girls Clubs of Camilla/Mitchell Co
Boys & Girls Clubs of Moultrie/Colquitt County
Boys Latin School of Maryland Inc.
Brady Center to Prevent Gun Violence
Brookwood School
The Bryn Mawr School
Buckhead Alliance Inc.
Cairo High School
Cambridge Christian School Inc.
Camp Arrow

Camp Charis, Inc.
Camp Sunshine
Campus Crusade for Christ
Campus Crusade for Christ International
Candler School of Theology
CARE
Caribbean Conservation Corp.
Carter Center
Cato Institute
Center for Life Enrichment
Center for Living Learning & Leading Inc.
Central Booster Club, Inc.
Chamber Orchestra of the Triangle
Children's Advocacy Center of Thomas County
Inc.
Children's Cheer & Toy Shop
Christ Church Anglican
Christ Community Church
City of Albany
City of Moultrie
City of Thomasville
Civil War Preservation Trust
College of the Atlantic
The College of William and Mary
Colonial Williamsburg Foundation
Colquitt County Arts Council, Inc.
Colquitt County Board of Education
Colquitt Food & Clothing Bank, Inc.
Colquitt County Packer Foundation, Inc.
Colquitt County Schools
Colquitt Regional Medical Center
Colquitt Regional Medical Center Foundation
Columbia Presbyterian Church
Columbia Theological Seminary
Community Foundation of Western
North Carolina



Community Foundation for Northeast Georgia
Community Soup Kitchen, Inc.
Community Support Foundation, Inc.
Compassion International, Inc.
Concord Coalition Corp.
Cornell University
The Craddock Center
Crossroads Church
Cumberland Christian Academy
CURE International
Dancing Cloud Farm Horse Rescue
Darton College
Deafness Research Foundation
DeSoto Trail Regional Library
Disciple of Jesus Ministries
Doctors Without Borders
Dougherty County Family Literacy Council
Ducks Unlimited, Inc.
Eager Avenue Grace Church
Eagle Ranch, Inc.
Early Memorial Hospital
East Baker Historical & 21st Century Community Corp.
Easter Seals Southern Georgia
Elon University
Emory University
Emory University School of Medicine
Empty Stocking Fund
Eminah of America, Inc.
Enable - USA
Environmental Education Alliance, Inc.
Epworth by the Sea
ETV Endowment of South Carolina
Executive Committee of the Southern Baptist Convention
Family Enrichment Group, Inc.

Strive2Thrive



In 2011, the Albany Chamber of Commerce, in partnership with the Albany Chamber Foundation and Phoebe Putney Memorial Hospital, set out to bring Strive2Thrive, a poverty initiative to South Georgia. Strive to Thrive is a model of the National Circles™ Initiative that has had tremendous results in eradicating poverty within thousands of families. The purpose of Strive2Thrive is to use every available resource to move Albany families into self-sufficiency by providing incentives, coaching, training, and technical assistance while removing barriers that have prevented life advancement. Albany had some of the worst poverty and illiteracy rates in South Georgia but the task of reversing the cycle of poverty seemed daunting. As the partnership evolved and public awareness increased, the Community Foundation was able to share some of the materials with some of its donors in the Albany area. The end result was a few businessmen approaching the Community Foundation and offering seed money for a partnership with the Community Foundation to establish the Albany Area Strive2Thrive Fund. Throughout the year, the Community Foundation assisted the Strive2Thrive committees and board with fundraising activities and within 6 months, through the ease of giving and the partnerships, the Strive2Thrive Fund had raised over \$150,000 to further the initiative and teach families how to change their lives forever. Albany Strive2Thrive Inc. has since received their 501(c)(3) status and continues in its partnership with the Community Foundation. Much because of Albany's success, they were also named as a National Development and Training Center for the Move the Mountain and National Circles Initiative.



For more information about ending poverty in your area or developing a local Strive2Thrive in your community, please contact the Community Foundation or visit Strive2Thrive's website at www.strive2thrive.org.



Our Grantees continued

Fellowship of Christian Athletes
Fellowship of Christian Athletes - Albany
Fellowship of Christian Athletes - Moultrie
Fellowship of Christian Athletes - Thomasville
Fellowship of Christian Athletes - Valdosta
Fellowship Foundation
Ferst Foundation for Childhood Literacy
First Baptist Church of Cairo
First Baptist Church of Camilla
First Baptist Church of Thomasville
First Baptist Church of Valdosta
First Presbyterian Church of Moultrie
First Presbyterian Church of Thomasville
First Presbyterian Church of Valdosta
First Seventh Day Adventist Church
First United Methodist Church of Cairo
First United Methodist Church of Thomasville
Florida A&M University
Florida Sheriffs Youth Ranches
Food for the Poor, Inc.
Fort Valley State University
Foundation for Public Broadcasting in Georgia
Friends of Lost Creek Forest, Inc.
Friends of the Edgartown Library
Fuller Center for Housing, Inc.
Georgia Campaign for Adolescent Pregnancy
Prevention (G-CAPP), Inc.
The Galloway School
Georgetown University

Georgia Baptist Children's Homes
Georgia Christian School, Inc.
Georgia Conservancy
Georgia Foothills Presbytery
Georgia Highlands College
Georgia Historical Society
Georgia Institute of Technology
Georgia Justice Project, Inc.
Georgia Land Trust
Georgia Masonic Charities Foundation, Inc.
Georgia Meth Project
Georgia Museums, Inc.
Georgia Public Policy Foundation
Georgia Rotary Student Program Endowment
Fund
Georgia Sheriffs' Youth Homes
Georgia Southern University
Georgia Southwestern State University
Georgia State University
Georgia Tech Foundation, Inc.
Georgia Trust for Historic Preservation
Georgia Wildlife Federation
Gettysburg Foundation
Gideons International
Girl Scouts of Historic Georgia, Inc.
Girl Talk
Good Shepherd Word of Deliverance
Goodwill Industries Big Bend, Inc.
Graceway Recovery Home
Grady County 4-H
Grady County Help Agencies, Inc.
Greater Atlanta Christian School
Habitat for Humanity
Habitat for Humanity of Colquitt County
Habitat for Humanity of Grady County
Habitat for Humanity of Valdosta-Lowndes
County

Hahira Middle School
Halcyon Home
Hand Memorial United Methodist Church
Hands & Hearts For Horses, Inc.
Hands On Thomas County
Harambee, Inc.
Harvest Field Ministries
Hawken School
Hayes Fundamental Camp, Inc.
Heritage Church
Hero House Childrens Advocacy Center of
Colquitt County
Highlands Historical Society
Highlands United Methodist Church
Highlands - Cashiers Chamber Music Festival, Inc
Highlands - Cashiers Hospital Foundation
Highlands - Cashiers Land Trust
Hopeful Baptist Church
Hopeful Volunteer Fire Department
Hudson Library of Highlands NC, Inc.
Institute for Georgia Environmental Leaders, IGEL
International Friendship Ministries
International Justice Mission
International Rescue Committee
Jack Hadley's Black History Memorabilia, Inc.
Jack Reid Memorial Foundation, Inc.
Johns Hopkins University
Joni and Friends
Kairos PMI, Inc.
Kappa Alpha Order Educational Foundation
LAMP, Inc.
Larry Nunnally Ministries, Inc.
Lawson Neel Medbank, Inc.
Leadership Georgia Foundation, Inc.
Leadership Institute
Liberty House of Albany, Inc.
Liberty Institute

Lily Pad SANE Center, Inc.
Lindsay Foundation
Lions Club International
Lipscomb University
Longleaf Alliance
Lowndes County Partnership for Health
Lowndes County Sheriff's Office
Lowndes Middle School
Lowndes - Valdosta Arts Commission Inc. - Turner
Center for the Arts
MADD
Marguerite Neel Williams Boys & Girls Clubs of
Southwest Georgia
Marion Medical Mission
Mayo Clinic
McKendree United Methodist Church
Medical Foundation of North Carolina, Inc.
Meigs Baptist Church
Mercer University
Mercer University Foundation
Methodist Home of South Georgia Conference
Middle Tennessee State University
Milton & Nancy Gardner Foundation
Mira Foundation, Inc.
Mission to the World PCA, Inc.
Mitchell Baker Service Center
Mitchell County 4-H
Mitchell County Agricultural Department
Mitchell County Board of Education
Mitchell County Children & Youth Collaborative
Mitchell County Extension Service
Mitchell County Food Bank & Help Center
Mitchell County State Court
Montreat Conference Center
Moss Farms Diving Foundation
Moultrie YMCA
Mount Pisgah Christian School

Museum of Colquitt County History
Museum of the Confederacy
National Park Foundation
National Parks Conservation Association
The National Society of the Colonial Dames of
America
National Sporting Library, Inc.
National Trust for Historic Preservation
National Wildlife Federation
Natural Resources Defense Council
The Nature Conservancy
The Nature Conservancy of Georgia, Inc.
Nepenthic Society
New Covenant Church
New Life Covenant Church
Next Level Training & Motivation, Inc.
North Georgia College & State University
Foundation
North Georgia New Church Network
Ocean Conservancy
Ochlocknee United Methodist Church
One Heart Beat, Inc.
Outreach Foundation
Owens Foundation for Wildlife Conservation, Inc.
Park Avenue United Methodist Church
PCA Reformed University Ministries
Pelham Board of Education
Pelham High School
Pensacola Christian College
Performing Arts Center, Inc.
Piedmont College
Piedmont Hospital, Inc.
Planned Parenthood
Planned Parenthood Southeast, Inc.
Pregnancy Support Clinic of Valdosta, Inc.
Presbyterian Homes of Georgia
Presbyterian Lay Committee

Prevent Blindness Georgia
Project HOPE
Protestant Episcopal High School in Virginia
Providence Missionary Baptist Church
Queens University of Charlotte
Raintree Village, Inc.
Randolph County Board of Education
Red Cross
Rescue Mission Ministries
Robert W. Woodruff Arts Center, Inc.
Roddenbery Memorial Library
Rotary Foundation
Ruediger Elementary School
Safe Haven
Salvation Army
Samaritan's Purse
Samford University
Second Harvest of South Georgia, Inc.
Seminole Boosters, Inc.
Seminole County Board of Commissioners
Serenity House
Servant Group International
Shepherd Center Foundation, Inc.
Shoes That Fit
Shriners' Hospital for Children
Simon Wiesenthal Center
Small Steps in Speech
The Smile Train
Smithsonian Institution



Our Grantees continued

Soldiers' Angels
South Georgia Ballet
South Georgia College
South Georgia Conference of the United Methodist Church
South Georgia House of Hope
South Georgia Medical Center Foundation
South Kent School
Southern Polytechnic State University
Southern Poverty Law Center
Southwest Georgia Cancer Coalition, Inc.
Southwest Georgia Community Action Council, Inc.
Southwest Georgia Technical College
Southwest Georgia Technical College Foundation
Southwestern State Hospital
SOWEGA Council on Aging, Inc.
Spelman College
St. Augustine's Catholic Church
St. Baldrick's Foundation
St. John Catholic School
St. Jude Children's Research Hospital
St. Margaret of Scotland Episcopal Church
St. Mark A.M.E. Church
Stanford University
State YMCA of Georgia, Inc.
Stephens College
The Stepping Stone, Inc.
Tall Timbers Foundation, Inc.

Tall Timbers Research Station & Land Conservation
Temple B'nai Israel
Temple Israel
Theatre Albany
Thomas Area Soccer Association, Inc.
Thomas County Board of Commissioners
Thomas County Central High School
Thomas County Department of Family & Children Services
Thomas County Food Bank
Thomas County Historical Society
Thomas County Public Library
Thomas County Schools
Thomas County Youth Camp
Thomas University
Thomas - Grady Service Center
Thomasville Antiques Show Foundation
Thomasville Christian School
Thomasville Community Resource Center
Thomasville Cultural Center Inc.
Thomasville Entertainment Foundation
Thomasville Garden Club, Inc.
Thomasville Genealogical, History & Fine Arts Library
Thomasville Landmarks
Thomasville Music & Drama Troupe
Thomasville On Stage & Company
Thomasville Pregnancy Center
Thomasville Rotary Club Scholarship Fund
Thomasville YMCA
Thomasville - Thomas County Habitat for Humanity
Thomasville - Thomas County Humane Society
Thornwell Home for Children
Tiftarea YMCA
Trinity Baptist Church

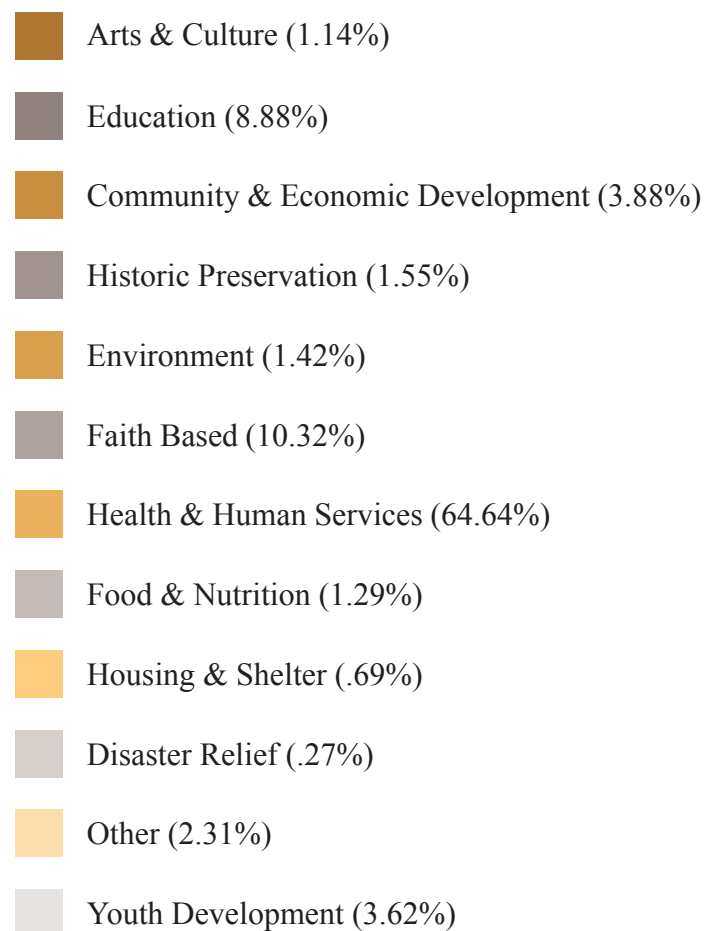
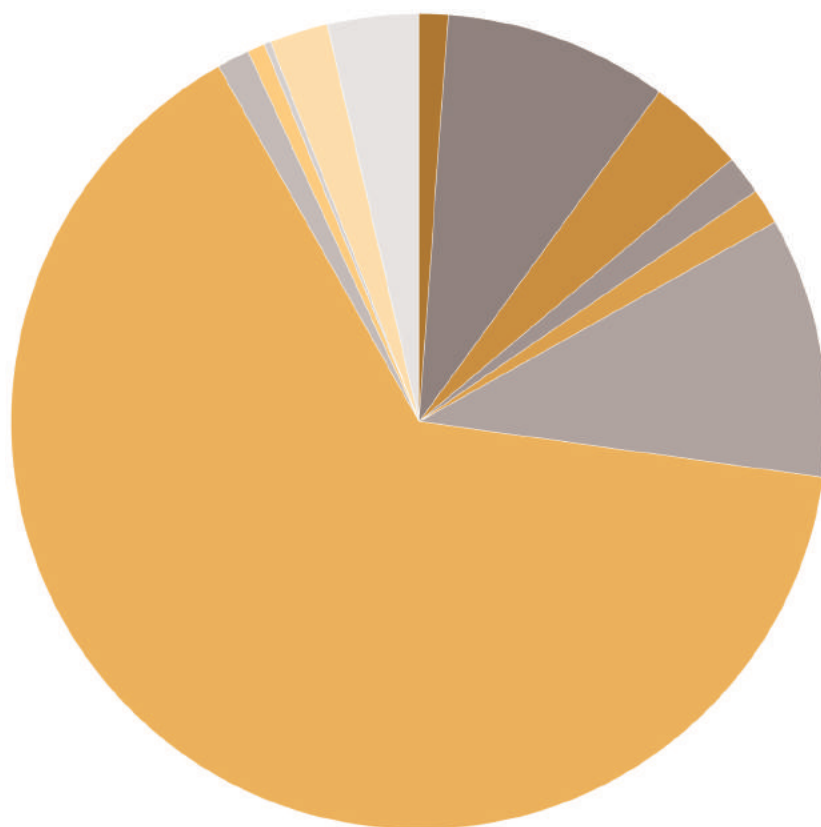
Trinity Christian Center of Santa Ana
Trinity Presbyterian Church
Troy University
Truett - McConnell College
Tucker Baptist Association
U.S. Sportsmen's Alliance Foundation
United Way of Colquitt County
United Way of Grady County
United Way of Thomas County
University of Georgia
University of Georgia Foundation
University of Georgia School of Law
University of Georgia/Terry College of Business
University of Georgia Extension 4-H
University of Georgia Warnell School of Forestry
University of Georgia Libraries
University of Texas
University of Virginia
Upstate Fatherhood Coalition
USO World Headquarters
The Vail Church
Valdosta Junior Service League
Valdosta Junior Womens Club, Inc.
Valdosta State University
Valdosta State University Foundation
Valdosta-Lowndes County YMCA
Valwood School
Vanderbilt University School of Engineering
Vashti Center Inc.
Viola Church of Christ
VMI Foundation, Inc.
Wake Forest University
Warrick Dunn Foundation, Inc.
Washington and Lee University
Wesleyan College
Westwood Church of Christ, Inc.
Westwood School

Wilderness Society
 Wiregrass Georgia Technical College
 Wolfson Children's Hospital
 World Association of Flower Arrangers USA, Inc.
 World Jewish Congress Foundation
 World Vision

Worth County 4-H
 Worth County Fire Department
 Worth County Library System
 Worth County Primary School
 Wounded Warrior Project
 Yale University

YMCA of Coastal Georgia, Inc.
 Young Life
 Young Life - Grady County
 Young Life - Thomasville

2011 Grants by Category



Fixed Income Partners

Albany Bank and Trust
Albany

Ameris Bank
Donalsonville

Citizens Community Bank
Valdosta

Citizens National Bank
Quitman

Colony Bank
Tifton

Commercial Bank
Thomasville

Commercial Banking Company
Moultrie

Farmers and Merchants Bank
Thomasville

First Federal Savings & Loan
Valdosta

First National Bank of Decatur County
Bainbridge

First Port City Bank
Bainbridge

First State Bank & Trust
Valdosta

First State Bank of Blakely
Blakely

Flint Community Bank
Albany

Guardian Bank
Valdosta

Heritage Bank of the South
Albany

Park Avenue Bank
Valdosta

Pelham Banking Company
Pelham

Regions
Valdosta

Southeast Asset Advisors
Thomasville

Synovus Securities
Thomasville

Thomasville National Bank
Thomasville

TNB Financial Services
Thomasville

Financial Partners

Equity Partners

Allen Mooney & Barnes
Thomasville

J. P. Morgan
New York

Commercial Bank
Thomasville

Edward Jones
Moultrie

Edward Jones
Thomasville

The Jenkins Group
Albany

Smith Barney
Valdosta

Raymond James
Bainbridge

Shields & Company
Thomasville

Southeast Asset Advisors
Thomasville

Stifel Nicolaus
Valdosta

Synovus Securities
Thomasville

TNB Financial Services
Thomasville

The Vanguard Group
Wayne, Pa

2011 Board of Trustees

CHAIRMAN
RANDY WAGES

Technical Associates of Georgia, Inc.
Dougherty County

VICE CHAIRMAN
ALSTON WATT

Williams Family Foundation of Georgia, Inc.
Thomas County

SECRETARY
GEORGE LILLY, II
Alexander & Vann, LLP
Thomas County

TREASURER
W. RALPH RODGERS, JR.
Moore, Clarke, DuVall & Rodgers, PC
Dougherty County

Our Commitment

To work together to create a better South Georgia while encouraging giving, promoting philanthropy and assisting nonprofits to be self sufficient and responsible stewards of their resources.

To pursue ways to promote lasting, positive change in all areas of our community while building long term relationships.

To constitute wise financial decisions; to be good stewards of the monies entrusted to us by our donors and nonprofit partners.

To provide excellent service to our donors and nonprofit organizations seeking assistance to fulfill their philanthropic intentions.

To continually develop our community assets and work to strengthen the vision.

To Multiply the Gift, and Maximize the Impact.

Since our establishment, the Community Foundation of South Georgia has been operating under these principles and remains devoted to the continual fulfillment of our mission.

JIMMY ALLEN
Pike Creek Turf, Inc.
Tift County

JOHN M. CARLTON, JR.
Whelchel & Carlton, LLP
Colquitt County

RUSSELL D. HENRY
Coleman Talley, LLP
Lowndes County

JAMES M. JETER
Standard Discount Corporation
Colquitt County

JOHN MCTIER
Coleman Talley, LLP (Retired)
Lowndes County

VANN K. PARROTT
Howell & Parrott, LLP
Brooks County

JOHN PRINCE
Prince Automotive Group
Tift County

E.J. "JUD" VANN, IV
Planters & Citizens Bank
Mitchell County

JO STOTT WINGATE
Retired State Employee
Irwin County

BILL BURKE
Burke, Worsham, & Harrell, LLC
Seminole County

DAVID CONE
Cone Machinery
Thomas County

ANN HOPKINS
Storm Services, LLC
Grady County

BRUCE W. KIRBO, JR.
Attorney At Law, LLC
Decatur County

*Community
Foundation
Staff*



PRESIDENT
DAVID M. CARLTON



**DIRECTOR OF
DONOR SERVICES**
RANDAE DAVIS



CONTROLLER
LISA HITT

*Serving 35 Counties
in South Georgia*



ATKINSON
BACON
BAKER
BENHILL
BERRIEN
BRANTLEY
BROOKS
CALHOUN
CHARLTON
CLAY
CLINCH
COLQUITT
COOK
CRISP
DECATUR
DOUGHERTY
EARLY

ECHOLS
GRADY
IRWIN
LANIER
LEE
LOWNDES
MILLER
MITCHELL
PIERCE
RANDOLPH
SEMINOLE
SUMTER
TERRELL
THOMAS
TIFT
TURNER
WARE

WORTH

135 North Broad Street, Suite 201
Post Office Box 2654
Thomasville, Georgia 31799

Telephone: 229.228.5088
Toll Free: 888.544.2317
Facsimile: 229.228.0848

www.cfsga.net

